

RETAIL FOR LEASE

21804 Marine View Dr S. Des Moines WA. 98198

Suite A / 867 sqft

Suite B / 644 sqft

Combined = 1,511 sqft



High Visibility Corner

+23,000 cars per day

Walk Score 75

Transit Line #: 635/121/122

Retail / Professional Services space for Salon,
Real Estate office, Legal, Tax, etc.,

\$36/Sqft Modified Gross

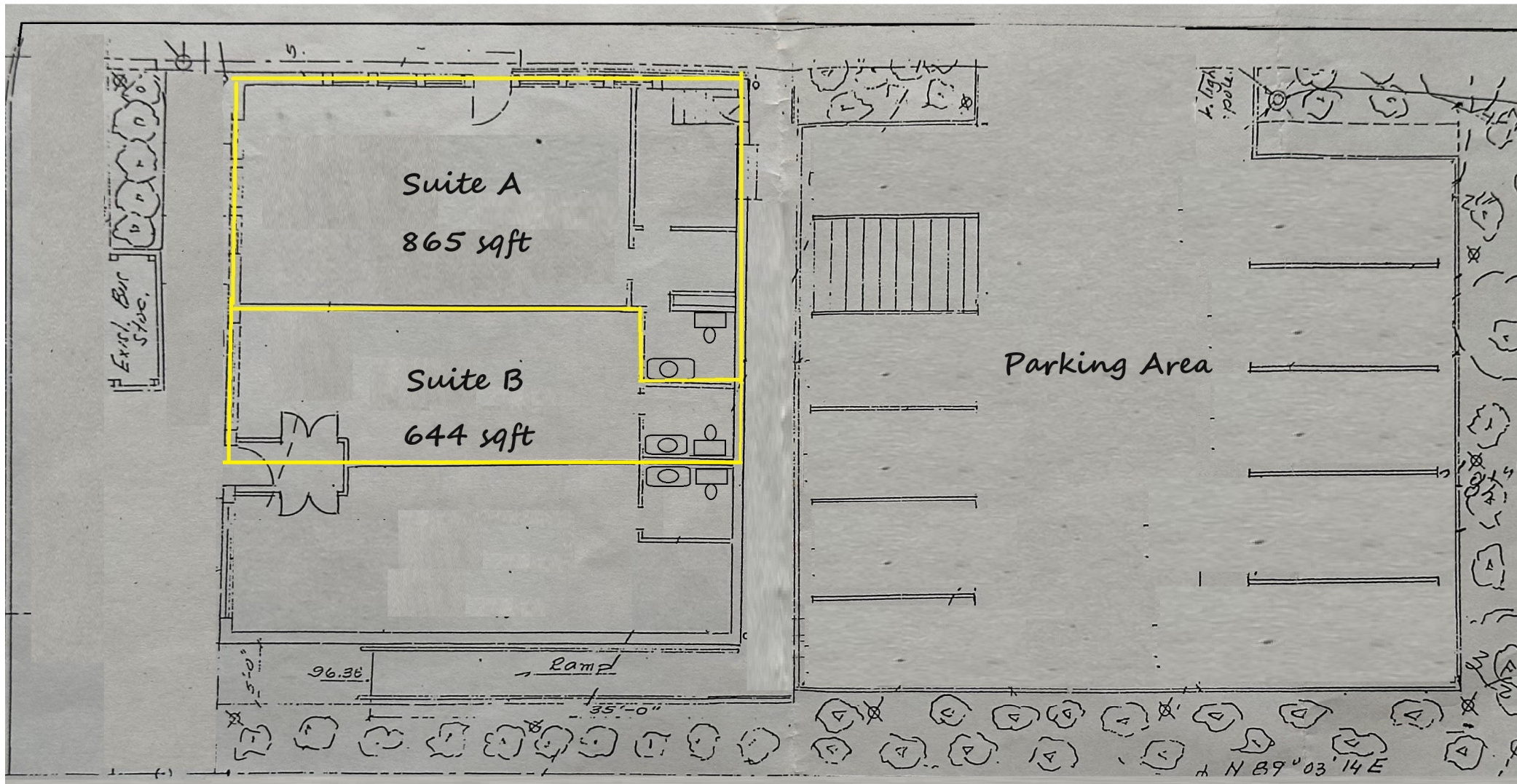
Matthew Royal : matthew@royalcommercialcorp.com / **Ron Cox**: ron@royalcommercialcorp.com Office: 1-425-952-4000

royalcommercialcorp.com

No warranty or representation, express or implied, is made as to the accuracy of the information contained herein, and same is submitted subject to errors omissions, change of price, rental or other conditions, withdrawal without notice, and to any specific listing conditions, imposed by our principals.

RETAIL FOR LEASE

21804 Marine View Dr S.
Des Moines WA. 98198



Matthew Royal : matthew@royalcommercialcorp.com / Ron Cox: ron@royalcommercialcorp.com Office: 1-425-952-4000



Royal Commercial Corp.

royalcommercialcorp.com

No warranty or representation, express or implied, is made as to the accuracy of the information contained herein, and same is submitted subject to errors omissions, change of price, rental or other conditions, withdrawal without notice, and to any specific listing conditions, imposed by our principals.