

# Office Space FOR LEASE

## *Lynnwood Business Center*

4208-4210 198th St, SW Lynnwood, WA. 98036



***FULL SERVICE RATE !!***

### **Bldg 4208**

*Suite #208 Office 637 sqft \$1,255/mo*



## **FEATURES**

- Multi-Tenant / Class B Bldg.
- Full Service Lease Agreements
- Flexible Terms / Expansion Options
- Efficient floorplans
- Easy access to I-5, 405 & Hwy 99
- Edmonds/Lynnwood/North Seattle
- Ample / Free parking

### **Bldg 4210**

*Suite #201 Office 576 sqft \$1,135/mo*

*Suite #208 Office 819 sqft \$1,597/mo*

## **CONTACT**

**Matthew Royal**  
matthew@royalcommercialcorp.com

**Ron Cox**  
ron@royalcommercialcorp.com

Office: 1-425-952-4000



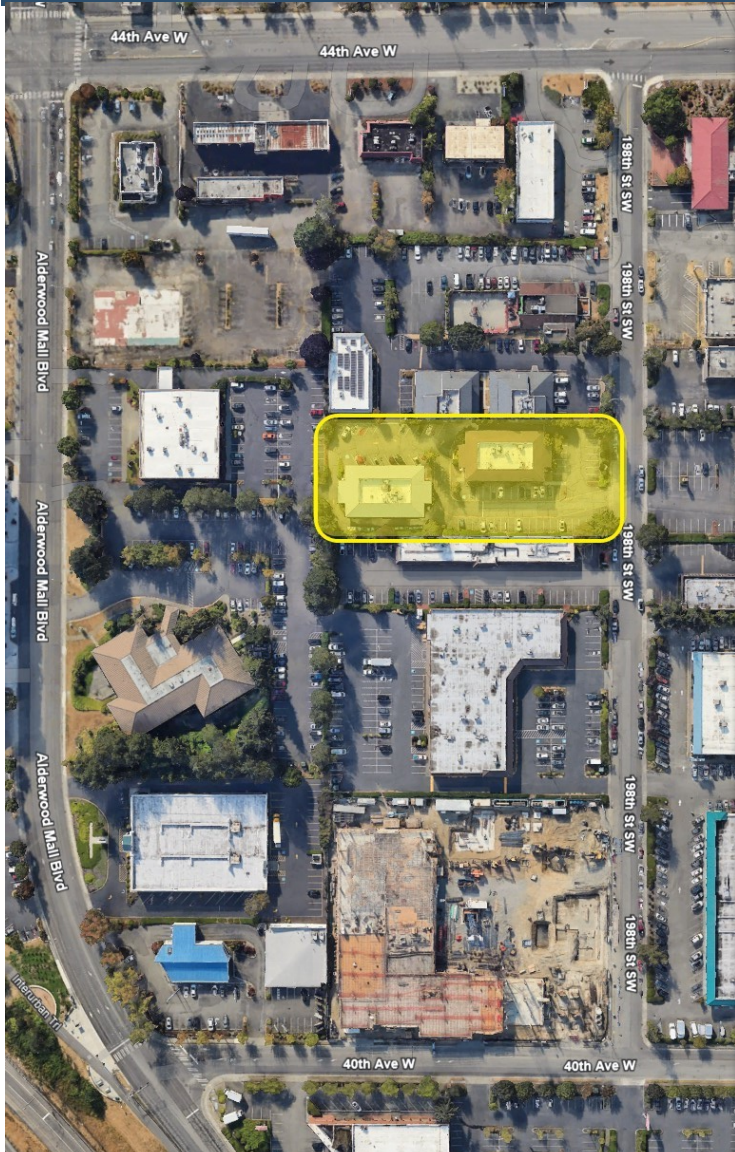
Royal Commercial Corp.

royalcommercialcorp.com

No warranty or representation, express or implied, is made as to the accuracy of the information contained herein, and same is submitted subject to errors omissions, change of price, rental or other conditions, withdrawal without notice, and to any specific listing conditions, imposed by our principals.



# Office Space FOR LEASE





# FOR LEASE

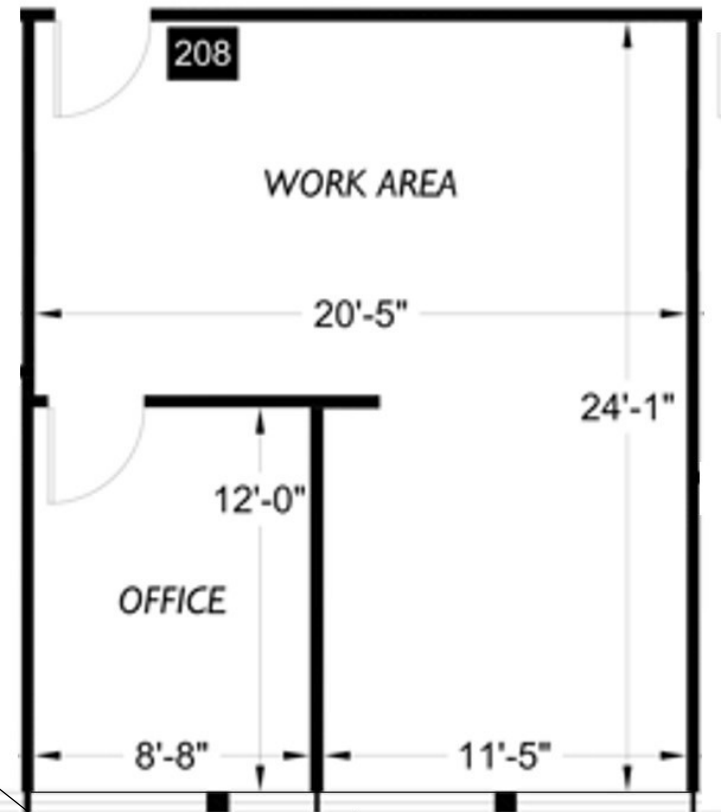
## Lynnwood Business Center

4208 198th St, SW Lynnwood, WA. 98036



### AVAILABLE SUITE / BLDG 4208

Suite	Office	Rates	Total
208	637 SF	\$1.97 SF/MO	\$1,255.00



#### CONTACT

**Matthew Royal**

matthew@royalcommercialcorp.com

**Ron Cox**

ron@royalcommercialcorp.com

**Office:** 1-425-952-4000

royalcommercialcorp.com



Royal Commercial Corp.

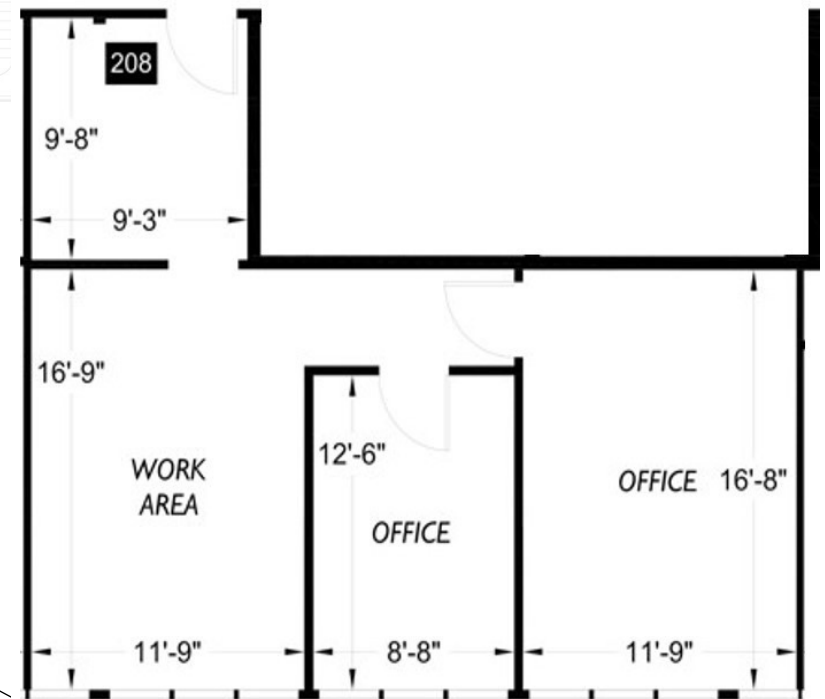
No warranty or representation, express or implied, is made as to the accuracy of the information contained herein, and same is submitted subject to errors omissions, change of price, rental or other conditions, withdrawal without notice, and to any specific listing conditions, imposed by our principals.

# FOR LEASE

## Lynnwood Business Center 4210 198th St, SW Lynnwood, WA. 98036



AVAILABLE SUITE / BLDG 4210			
Suite	Office	Rates	Total
208	819 SF	\$1.95 SF/MO	\$1,597.00



### CONTACT

**Matthew Royal**  
matthew@royalcommercialcorp.com

**Ron Cox**  
ron@royalcommercialcorp.com

**Office:** 1-425-952-4000



Royal Commercial Corp.

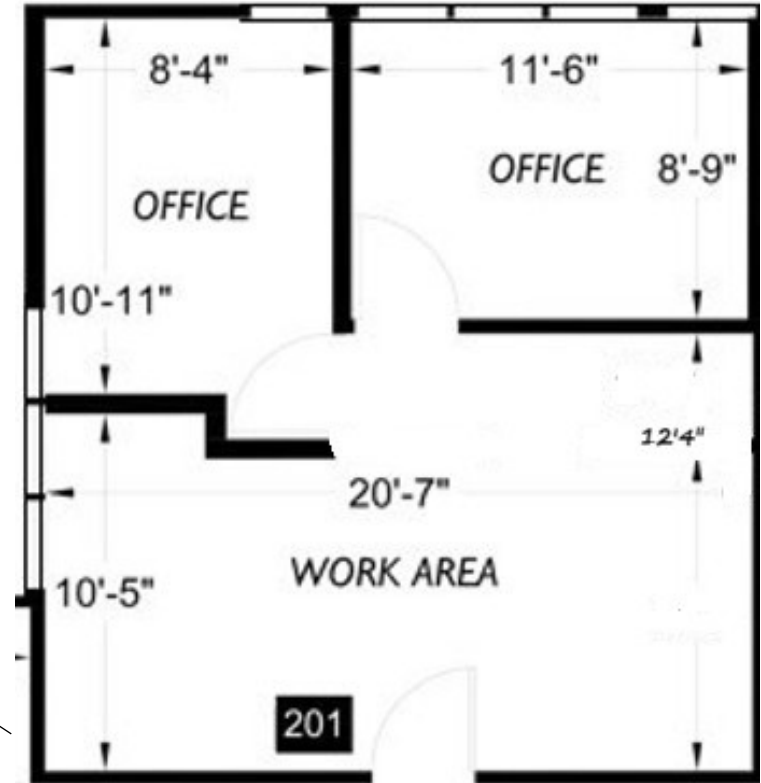
# FOR LEASE

## Lynnwood Business Center

4210 198th St, SW Lynnwood, WA. 98036

### AVAILABLE SUITE / BLDG 4210

Suite	Office	Rates	Total
201	576 SF	\$1.97 SF/MO	\$1,135.00



### CONTACT

**Matthew Royal**  
matthew@royalcommercialcorp.com

**Ron Cox**  
ron@royalcommercialcorp.com

**Office:** 1-425-952-4000



Royal Commercial Corp.